

\$55,100 - 3 Pine Place E, Claresholm

MLS® #A2176910

\$55,100

0 Bedroom, 0.00 Bathroom,
Land on 0.15 Acres

NONE, Claresholm, Alberta

Welcome to Claresholm's newest subdivision, Pine Place East. Tucked up in the NE corner of town and backing onto Patterson Park. This is one of the eight lots available. Individuals and developers welcome. R1 zoning and GST applicable.

Essential Information

| | |
|-----------|------------------|
| MLS® # | A2176910 |
| Price | \$55,100 |
| Bathrooms | 0.00 |
| Acres | 0.15 |
| Type | Land |
| Sub-Type | Residential Land |
| Status | Active |

Community Information

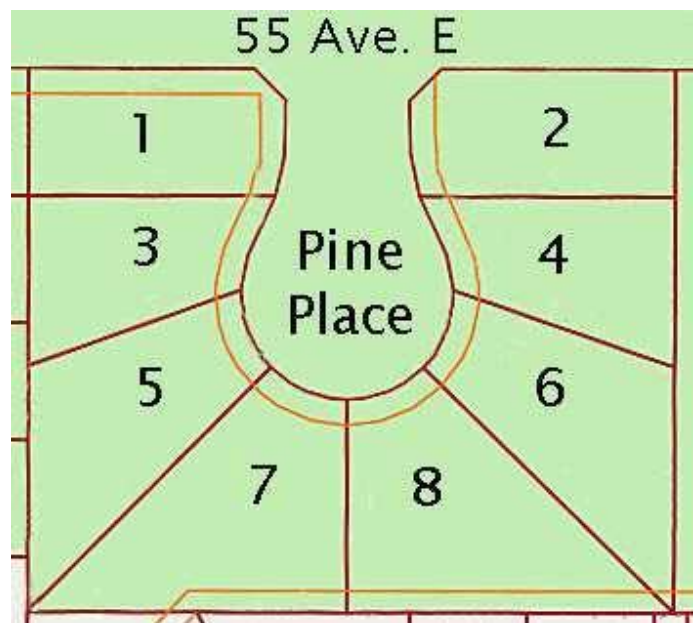
| | |
|-------------|------------------------------|
| Address | 3 Pine Place E |
| Subdivision | NONE |
| City | Claresholm |
| County | Willow Creek No. 26, M.D. of |
| Province | Alberta |
| Postal Code | T0L 0T0 |

Amenities

| | |
|-----------|---|
| Utilities | Electricity Available, Natural Gas Available, Underground Utilities |
|-----------|---|

School Information

| | |
|----------|--|
| District | Livingstone Range School Division No. 68 |
|----------|--|



Additional Information

| | |
|----------------|--------------------|
| Date Listed | November 1st, 2024 |
| Days on Market | 190 |
| Zoning | R1 |

Listing Details

| | |
|----------------|------------------------|
| Listing Office | MaxWell Capital Realty |
|----------------|------------------------|

Data is supplied by Pillar 9â„¢ MLS® System. Pillar 9â„¢ is the owner of the copyright in its MLS® System. Data is deemed reliable but is not guaranteed accurate by Pillar 9â„¢. The trademarks MLS®, Multiple Listing Service® and the associated logos are owned by The Canadian Real Estate Association (CREA) and identify the quality of services provided by real estate professionals who are members of CREA. Used under license.