

# \$574,000 - 79 Bridleglen Manor Sw, Calgary

MLS® #A2209812

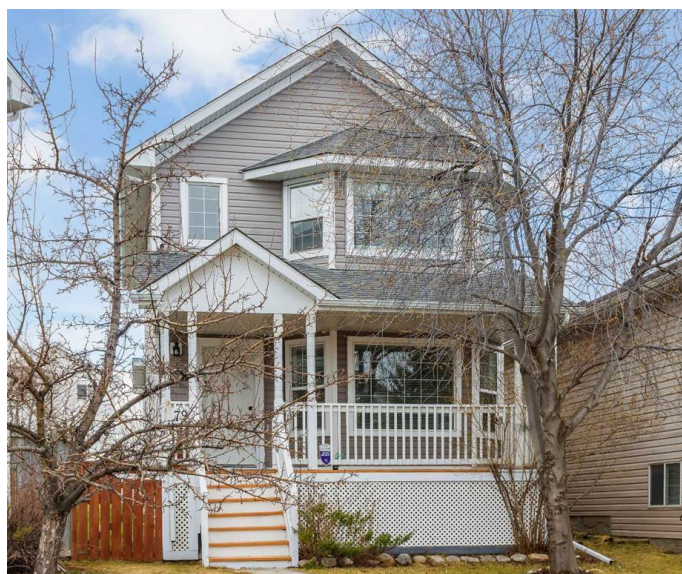
**\$574,000**

3 Bedroom, 2.00 Bathroom, 1,313 sqft

Residential on 0.10 Acres

Bridlewood, Calgary, Alberta

Welcome to a home where comfort meets charm—nestled on a quiet, pie-shaped lot in the heart of the warm and welcoming community of Bridlewood. From the moment you arrive, you™ll be captivated by the freshly updated exterior, featuring a new roof, soffits, eaves, and siding—setting the perfect tone for what's waiting inside. Step through the front door into a bright, airy living space where natural light pours through large windows, casting a golden glow on every gathering and quiet moment alike. The spacious living room invites laughter and conversation, while the cozy family room is perfect for curling up with a book or enjoying movie night with loved ones. At the heart of the home, the kitchen sparkles with brand-new appliances, designed both for everyday living and special occasions. Whether you™re hosting weekend brunches or savoring your morning coffee, this space is built for connection and comfort. A convenient 2-piece bath completes the main floor. Step outside to your sun-drenched, west-facing backyard, where evenings are made for al fresco dining on the patio, gardening, or unwinding as the sun sets behind your double detached garage. There's plenty of space to relax, play, and make lasting memories. Upstairs, you™ll find three serene bedrooms, each offering a peaceful retreat after a long day. A stylish and functional 4-piece bathroom adds ease and comfort to your daily routine. And just below it all, an unspoiled basement awaits your



personal touch—whether you envision a home gym, recreation room, guest suite, or cozy hideaway, the possibilities are endless. Bridlewood is a way of life—blending nature, community, and convenience. Families will appreciate being close to top-rated schools like Bridlewood School and Glenmore Christian Academy, while weekends invite adventure through nearby parks, playgrounds, and the expansive trails of Fish Creek Provincial Park. Everyday essentials are right around the corner at Shawnessy Village, and with easy access to Stoney Trail and Macleod Trail, commuting is seamless keeping you connected to the city while enjoying the peace of suburban living. This is more than a house—it's a place where memories are made, stories begin, and life unfolds beautifully. Welcome home!

Built in 1999

**Essential Information**

MLS® #	A2209812
Price	\$574,000
Bedrooms	3
Bathrooms	2.00
Full Baths	1
Half Baths	1
Square Footage	1,313
Acres	0.10
Year Built	1999
Type	Residential
Sub-Type	Detached
Style	2 Storey
Status	Active

**Community Information**

Address	79 Bridleglen Manor Sw
Subdivision	Bridlewood

City	Calgary
County	Calgary
Province	Alberta
Postal Code	T2Y3X1

### Amenities

Parking Spaces	4
Parking	Double Garage Detached, RV Access/Parking
# of Garages	2

### Interior

Interior Features	No Smoking Home, Open Floorplan, Separate Entrance, Vinyl Windows
Appliances	Electric Stove, Garage Control(s), Microwave, Range Hood, Washer/Dryer, ENERGY STAR Qualified Dishwasher, ENERGY STAR Qualified Refrigerator
Heating	Forced Air, Natural Gas
Cooling	None
Has Basement	Yes
Basement	Full, Unfinished

### Exterior

Exterior Features	Private Yard
Lot Description	Back Lane, Cul-De-Sac, Landscaped, Level, Private, Treed, Few Trees, Pie Shaped Lot
Roof	Asphalt Shingle
Construction	Vinyl Siding, Wood Frame
Foundation	Poured Concrete

### Additional Information

Date Listed	April 29th, 2025
Days on Market	9
Zoning	R-G

### Listing Details

Listing Office	RE/MAX Real Estate (Mountain View)
----------------	------------------------------------

Data is supplied by Pillar 9â„¢ MLS® System. Pillar 9â„¢ is the owner of the copyright in its MLS® System. Data is deemed reliable but is not guaranteed accurate by Pillar 9â„¢. The trademarks MLS®, Multiple Listing Service® and the associated logos are owned by The Canadian Real Estate Association (CREA) and identify the quality of services provided by real estate professionals who are members of CREA. Used under license.