

# \$874,900 - 635 Willingdon Boulevard Se, Calgary

MLS® #A2216175

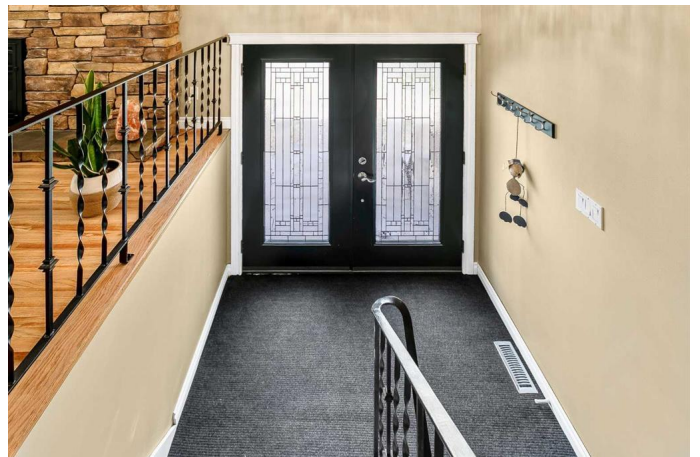
## \$874,900

4 Bedroom, 2.00 Bathroom, 1,158 sqft

Residential on 0.19 Acres

Willow Park, Calgary, Alberta

Welcome to a Rare Gem in Willow Park Semi-Estates. Set on an expansive 76' x 110' lot with a sunny, south-facing backyard, this exceptional property offers a rare opportunity in one of Calgary's most sought-after and mature neighbourhoods. Whether you're a gardener, entertainer, or growing family, you'll love the beautifully landscaped outdoor oasis, complete with mature fruit trees, patio and plenty of space to cultivate your own garden. Car enthusiasts and hobbyists will be thrilled by the attached double garage and the rare triple detached garage—ideal for extra vehicles, a workshop, or additional storage. The triple-car garage comes insulated and features vaulted ceilings (ideal for a future lift). Inside, the home boasts over 2,200 sqft. of well-maintained living space and numerous thoughtful upgrades—including central A/C, a water softener & central vacuum. Step into the bright and functional main floor, where an open-concept layout and hardwood floors create a warm, welcoming atmosphere. The beautifully renovated kitchen is a true centrepiece, featuring stylish two-toned cabinetry, stainless steel appliances, a wall oven, abundant storage, and a large island with an eating bar. The spacious dining area easily accommodates large family gatherings, while the cozy living room is complemented by a gas fireplace with a stone surround. Custom-built-in cabinetry adds both character and practical storage throughout the main



living space. The elegant 5-piece main bathroom offers dual sinks, granite countertops, and modern finishes. Two generously sized bedrooms with ample closet space complete the main floor. Downstairs, the fully developed basement features two additional bedrooms, a full 4-piece bathroom, a large family room, a dedicated laundry area, and plenty of storage. Nestled in an established, family-friendly neighbourhood, this home offers the perfect blend of suburban peace and unbeatable convenience. Enjoy unbeatable walkability with Southcentre Mall, Deville Coffee, the Italian Centre, Sushi Ginza and all the boutique shops and amenities of Willow Park Village just steps from your door! Donâ€™t miss your chance to own a truly unique property in Willow Park.

Built in 1968

**Essential Information**

MLS® #	A2216175
Price	\$874,900
Bedrooms	4
Bathrooms	2.00
Full Baths	2
Square Footage	1,158
Acres	0.19
Year Built	1968
Type	Residential
Sub-Type	Detached
Style	Bi-Level
Status	Active

**Community Information**

Address	635 Willingdon Boulevard Se
Subdivision	Willow Park
City	Calgary
County	Calgary

Province	Alberta
Postal Code	T2J 2B3

### Amenities

Parking Spaces	9
Parking	Double Garage Attached, Insulated, Oversized, Triple Garage Detached
# of Garages	5

### Interior

Interior Features	Built-in Features, Ceiling Fan(s), Central Vacuum, Double Vanity, Granite Counters, Kitchen Island, No Smoking Home
Appliances	Built-In Oven, Central Air Conditioner, Dishwasher, Dryer, Electric Cooktop, Garage Control(s), Garburator, Range Hood, Refrigerator, Washer, Water Softener, Window Coverings
Heating	Forced Air
Cooling	Central Air
Fireplace	Yes
# of Fireplaces	1
Fireplaces	Gas
Has Basement	Yes
Basement	Exterior Entry, Finished, Full

### Exterior

Exterior Features	Private Yard
Lot Description	Back Lane, Back Yard, Front Yard, Fruit Trees/Shrub(s), Garden, Landscaped, Lawn, Level, Private, Treed
Roof	Asphalt Shingle
Construction	Vinyl Siding, Wood Frame
Foundation	Poured Concrete

### Additional Information

Date Listed	April 30th, 2025
Days on Market	15
Zoning	R-CG

### Listing Details

Listing Office	eXp Realty
----------------	------------

Data is supplied by Pillar 9â„¢ MLSÂ® System. Pillar 9â„¢ is the owner of the copyright in its MLSÂ® System. Data is deemed reliable but is not guaranteed accurate by Pillar 9â„¢. The trademarks MLSÂ®, Multiple Listing ServiceÂ® and the associated logos are owned by The Canadian Real Estate Association (CREA) and identify the quality of services

