

# \$935,000 - 10616 Mapleglen Crescent Se, Calgary

MLS® #A2217102

**\$935,000**

3 Bedroom, 3.00 Bathroom, 1,258 sqft  
Residential on 0.12 Acres

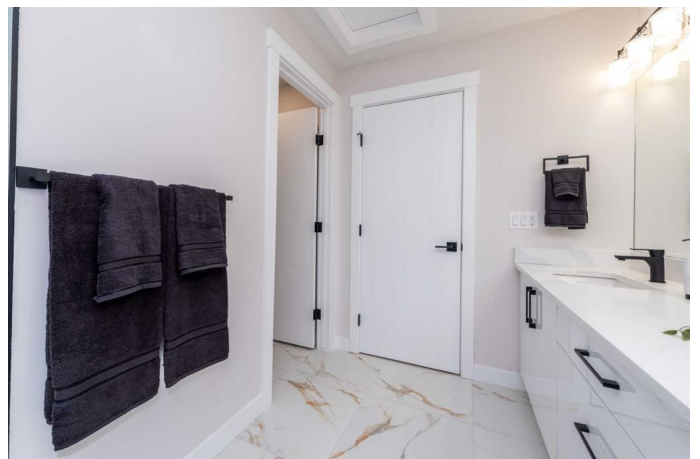
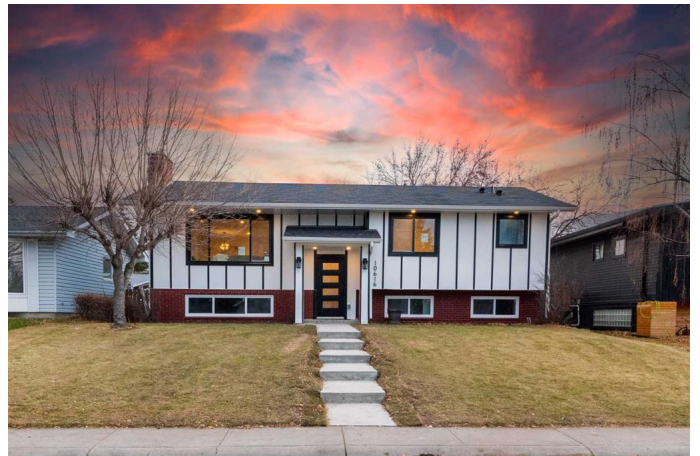
Maple Ridge, Calgary, Alberta

This beautifully renovated bi-level home blends modern design with everyday comfort, featuring two generously sized bedrooms on the main floor, a stunning new kitchen with sleek appliances, elegant flooring throughout, and two luxurious 5-piece bathrooms—all centered around a warm, inviting fireplace. The fully finished basement expands the living space with two more bedrooms, a full bathroom, a stylish wet bar, and a second fireplace, offering the perfect setting for guests or entertaining. Outside, the home showcases durable new hardy board siding with smart board accents, a double-car garage, fresh concrete sidewalks and steps, and a landscaped backyard, creating a perfect balance of style, function, and curb appeal.

Built in 1967

## Essential Information

MLS® #	A2217102
Price	\$935,000
Bedrooms	3
Bathrooms	3.00
Full Baths	3
Square Footage	1,258
Acres	0.12
Year Built	1967
Type	Residential
Sub-Type	Detached



Style	Bi-Level
Status	Active

### **Community Information**

Address	10616 Mapleglen Crescent Se
Subdivision	Maple Ridge
City	Calgary
County	Calgary
Province	Alberta
Postal Code	T3J1X2

### **Amenities**

Parking Spaces	4
Parking	Double Garage Detached
# of Garages	2

### **Interior**

Interior Features	Bar, Granite Counters, Kitchen Island
Appliances	Dishwasher, Electric Range, Garage Control(s), Microwave Hood Fan, Refrigerator, Washer/Dryer
Heating	Fireplace(s), Forced Air
Cooling	None
Fireplace	Yes
# of Fireplaces	1
Fireplaces	Electric
Has Basement	Yes
Basement	Finished, Full

### **Exterior**

Exterior Features	Balcony
Lot Description	Back Lane, Back Yard, City Lot, Landscaped, Level, Rectangular Lot
Roof	Asphalt Shingle
Construction	Wood Frame
Foundation	Poured Concrete

### **Additional Information**

Date Listed	May 2nd, 2025
Days on Market	9
Zoning	R-CG

## Listing Details

Listing Office           TREC The Real Estate Company

Data is supplied by Pillar 9â,,ç MLSÂ® System. Pillar 9â,,ç is the owner of the copyright in its MLSÂ® System. Data is deemed reliable but is not guaranteed accurate by Pillar 9â,,ç. The trademarks MLSÂ®, Multiple Listing ServiceÂ® and the associated logos are owned by The Canadian Real Estate Association (CREA) and identify the quality of services provided by real estate professionals who are members of CREA. Used under license.